

REXEL

AUTOMATION
SOLUTIONS

FRONTIER

THE FUTURE OF INDUSTRIAL AUTOMATION

[Services & Support](#)[Training](#)[Shop Now](#)[Automation Blog](#)

Rexel Delivered Services

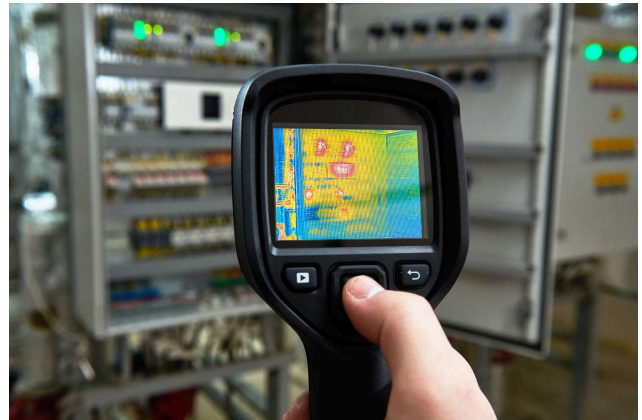
Why Do A Thermal Audit?

As temperatures rise, industrial electronics can overheat, causing malfunctions and even complete device failure, which can ultimately lead to machine downtime. A thermal audit can identify problem areas before they become bigger obstacles.

A thermal audit will also help you do the following:

- Maximize the lifecycle of electronic devices
- Sustain productivity
- Cut avoidable capital expenses

Take the first step towards your FREE thermal audit.

[Request One Today!](#)

Repair/Remanufacturing Makes Environmental and Financial Sense

Electrical equipment can often end up in landfills, contributing to environmental harm and draining your budget whenever you buy new products. Repair/remanufacturing is a

sustainable option that will also help you cut costs, minimize downtime, and extend the lifespan of your equipment.

Benefits of a Repair Solutions



- Repaired equipment is protected by a 12-month, full-unit warranty (not just the repaired parts)
- Decreased service costs
- Recover faster with our equipment exchange program
- Repair obsolete or hard-to-find replacement products
- Predict failures and enhance product reliability with trend analysis

Increase operating effectiveness, reduce costs, and make a responsible choice for the planet.

[Learn More](#)

[Get Started](#)



Unlock the future of manufacturing with R+IQ. An expanded group within the Rexel organization, R+IQ is predominantly positioned to help customers embrace the synergy of people, processes, and technology and guide them toward Industry 4.0 success.

In the coming weeks, we will introduce our new R+IQ team and share how R+IQ | Operational Intelligence can help you deliver the results you need to thrive in the future.



[Explore R+IQ](#)

[Watch Video](#)

Cybersecurity Strategies to Protect Your Expanding Attack Surface

The rise of smart factories and the Industrial Internet of Things (IIoT) is revolutionizing manufacturing, but it also creates new cybersecurity risks.



- **Ransomware:** A major threat, accounting for over 70% of cyberattacks in manufacturing in 2023.
- **Targets:** Not just IT infrastructure, but also Industrial Control Systems (ICS), impacting production lines, data, and potentially causing physical damage.

To protect your operations:

- **Conduct a thorough security assessment:** Identify all connected devices and systems, including legacy systems, to find vulnerabilities.
- **Prioritize security by design:** Integrate cybersecurity from the start for new projects and systems.
- **Leverage AI:** Use artificial intelligence to analyze data, detect threats, and predict security system failures.
- **Educate your workforce:** Train employees to identify phishing and social engineering tactics.
- **Embrace a zero-trust model:** Assume no user or device is trustworthy and implement strong access controls.

Remember, cybersecurity is an ongoing process. As technology evolves, so do the threats. Rexel's cybersecurity experts can help you navigate this complex landscape.

[Elevate Your Cybersecurity](#)

[FREE Cyber Assessment](#)

[Automation Blog](#)

A Powerful Partnership: How Metallus Forged a Safer, More Efficient Future

6/27/2024 - Rexel

When Metallus (formerly TimkenSteel) needed to sharpen its company's safety training and software management, they turned to Rexel Automation Solutions to hone their procedures. This blog post highlights how we helped Metallus improve their safety and efficiency while saving them money and boosting employee confidence.

[>> Read now](#)



Modern Machine Safety Concepts: What You Need to Know to Tackle a Project

6/19/2024 - Dave Cucerzan, Senior Industrial Automation Solutions Specialist

In today's digital age, automation and data analytics are transforming industrial safety. Explore how these technologies are revolutionizing manufacturing by minimizing risks, predicting hazards, and ultimately creating safer workplaces for employees. From robotic automation to data-driven insights, discover how these advancements are shaping the future of industrial safety.

[>> Read Now](#)

Featured Learning

A New Merger: Data Ready and Smart Machines Come Together Empowering OEMs

The Journey to Operational Excellence: Maximize Material and Capacity Utilization



July 24, 2024 | 10:00 AM - 11:00 AM CST
Sponsored By: Rockwell Automation

Unleash the Hidden Potential of Smart Manufacturing Data.

[Register Here](#)



August 8, 2024 | 10:00 AM - 11:00 AM CST
Sponsored By: Rockwell Automation

Optimize Production with Smart Batch Management

[Register Here](#)

Workforce **Development** **2024**

[View Courses & Register](#)

As workforce and technology landscapes undergo dramatic change, it's critical for you to supplement skill shortages to stay productive and keep up with customer demands.

A clear workforce development and training strategy will help you mitigate workforce challenges. Empower your people and extend the reach of your team with Rexel's Workforce Support and Training Services.

CLICK TO CONNECT

YOUR RESOURCE FOR LOCAL SERVICES & SUPPORT

If you received this email as a forward, please subscribe to The Frontier [here](#).

[RexelUSA.com](#) [Contact](#) [Terms](#) [Privacy](#)



A Rexel Group Company
www.rexel.com



This email was sent to molly.george@rexelusa.com by info@rexelusa.com

5429 Lyndon B Johnson Fwy Suite 600, Dallas, TX 75240

[Manage Subscriptions](#)