

REXEL

AUTOMATION
SOLUTIONS

FRONTIER

THE FUTURE OF INDUSTRIAL AUTOMATION

[Services & Support](#)[Training](#)[Shop Now](#)[Automation Blog](#)

Start the Year Off Right: Assess Your Workplace Safety

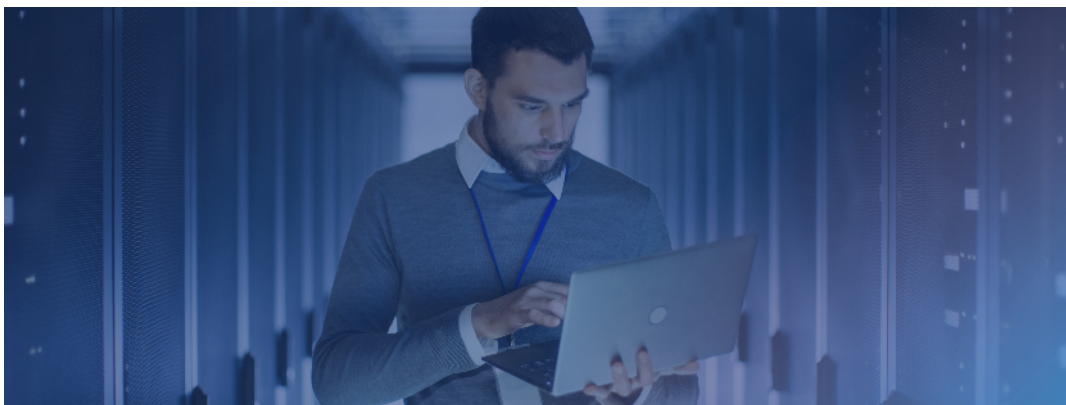
In 2023, LOTO, PPE, and Machine Guarding registered again in the OSHA Top 10 of reported violations.

In addition to the devastation to injured employees and family members, safety occurrences in the U.S. are measured in billions each year.

Start the year by allowing our Safety Experts to assess your current Safety Protocol and set you on the path to improving workforce safety.



We Look Forward to Partnering
With You in 2024!

[Download Our Safety Guide](#)[Request Your Safety Assessment](#)

3 Simple Industrial Cybersecurity Wins for 2024

- 1. Update Your Passwords:** Easily guessable default passwords are a favorite of hackers. Use complex combos with symbols, caps, numbers, and spaces. For instance, substitute \$ for S, 3 for E.
- 2. Guard Your Remote Access:** If you allow remote access to your industrial network, keep an up-to-date user list and a proven system for tracking user access to

resources, machines, and equipment.

3. **Segment Your Network:** Use Virtual Local Area Networks (VLANs) and Layer 3 switches to limit the spread of malicious software and/or malware should a segment of the network become infected.

By taking these simple steps, you'll boost your industrial cybersecurity and protect your business from costly disruptions. If you need help getting started, please [contact us](#) for more information. We're here to guide you on your cybersecurity journey.

[See Our New Page](#)

AUTOMATION INNOVATIONS

Connected Components Workbench™ Software



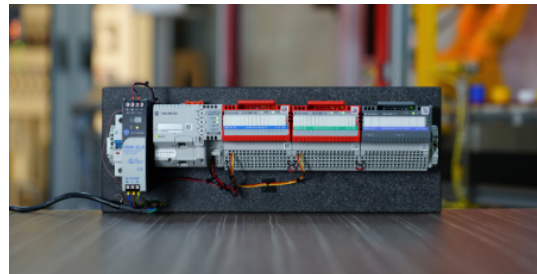
[Learn More](#)

Simplify standalone machine development for multiple industries with the latest Connected Components Workbench™ software version 22. As the integrated design software for the Micro Control System, the Connected Components Workbench software provides controller programming and simulation, device configuration and visualization with Human Machine Interface (HMI) editor. The software helps reduce initial machine development time and cost.

FLEX 5000® I/O

Rockwell Automation FLEX 5000® I/O modules are a rugged and flexible distributed I/O solution, which allows you to choose your I/O to meet your operational needs.

- Gain better control of your Process, Hybrid and Discrete applications
- Meet more fail-safe application requirements



[Learn More](#)

AUTOMATION FRONTIER BLOG

Rexel's 2023 Blog Post Roundup: Top Reads and Industry Insights



As 2023 wraps up, it's time to reflect on the most-read blog posts from this year. We explored cybersecurity, cutting-edge technology, shared practical and useful tips to help you optimize your industrial operations, and more. Thank you for taking the time to explore what we have to offer, and we hope you'll keep coming back to see what's new... [Read The Blog](#)

Cooking Up Efficiency: Bama Companies' Modernization Journey

Bama Companies, a distinguished name in the food and beverage industry, operates three production facilities and a chilled storage site, creating millions of food items daily for global markets. Despite their scale, challenges loomed—labor turnover and a mix of aging and modern technology hindered their efficiency and increased operational costs.

Teaming up with Rexel, a comprehensive solution was crafted using the Rexel Support Agreement: from on-site assessments to modernization initiatives, including third-party support and training.

This collaboration fostered a holistic approach, addressing diverse issues collectively, enhancing workforce competency, and reducing downtime.

The result? A transformative shift in operations, empowering Bama Companies for sustainable growth within the industry... [Read The Case Study](#)



FEATURED LEARNING

Keep Building Your Industrial Automation Skills

To help you continue to build your skills throughout 2024, **Rockwell Automation is offering a 20% discount on 1 single-user Learning+ annual subscription** to everyone who purchased an **Advanced Training Pass** at the November 2023 Automation Fair in Boston.

Featuring hundreds of lessons and unlimited access to scheduled virtual classroom sessions, Learning+ Training provides a convenient way for you to expand your knowledge of both fundamental and product-specific topics.

Learn more about Rockwell Automation training options at rok.auto/training and then contact us to get your discount. But don't wait. The discount must be used by **January 31, 2024**.

Automation Fair®
DISCOVER
What's Possible



**Unlock the Future of Industrial
Automation with FactoryTalk View**

**Drive Production Closer to
Perfection with AI**



January 24, 2024 | 9:00 - 10:00 PM CST
Sponsored By: Rockwell Automation

This webinar will focus on the new features of FactoryTalk View v14 SE/ME. The target audience will be current users and new potential users of the HMI application.

[Register Here](#)



February 6, 2024 | 11:00 - 12:00 PM CST
Sponsored By: Rockwell Automation

Find out what's new with FactoryTalk Analytics LogixAI and how it's providing plant and automation engineers with the information they need for benefits including reduced scrap and increased throughput.

[Register Here](#)

Workforce **Development** **2024**

[View Courses & Register](#)

As workforce and technology landscapes undergo dramatic change, it's critical for you to supplement skill shortages to stay productive and keep up with customer demands.

A clear workforce development and training strategy will help you mitigate workforce challenges. Empower your people and extend the reach of your team with Rexel's Workforce Support and Training Services.

CLICK TO CONNECT

YOUR RESOURCE FOR LOCAL SERVICES & SUPPORT

 **Rexel Customer Support Center - 1-888-REXELPRO (739-3577) | Your Go-To Partner**

If you received this email as a forward, please subscribe to The Frontier [here](#).

[RexelUSA.com](#) [Contact](#) [Terms](#) [Privacy](#)



A Rexel Group Company
www.rexel.com