



FRONTIER

THE FUTURE OF INDUSTRIAL AUTOMATION

Services & Support

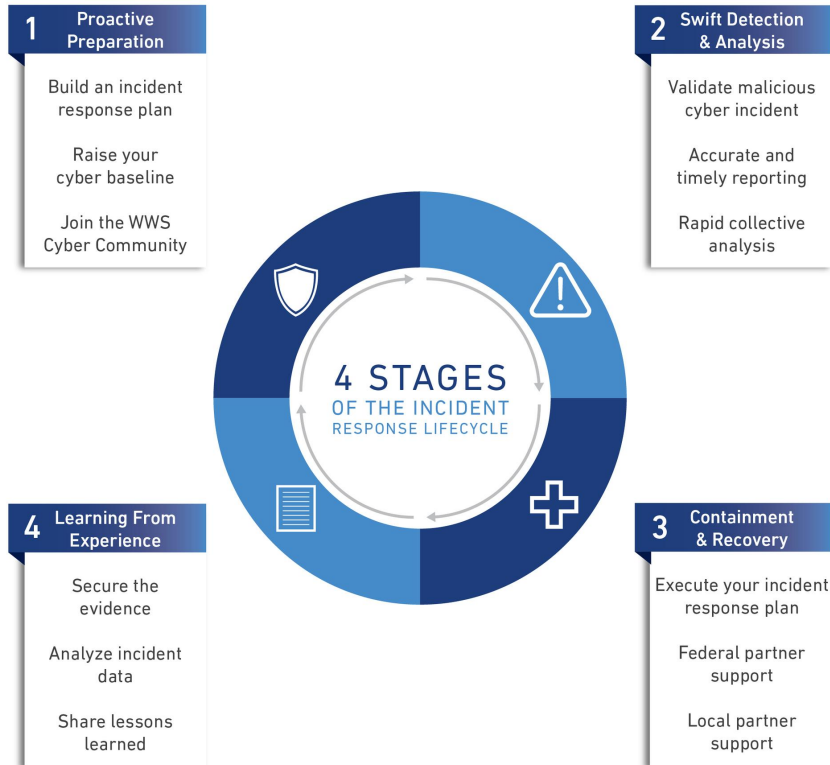
Training

Shop Now

Automation Blog

Your Guide to Help Protect Your From Cyber Threats

The Water/Wastewater Systems (WWS) sector faces real cyber threats. Threat actors continue to access water utilities across the country, with potential to harm the public. To combat this, CISA, the FBI, and the EPA released a comprehensive incident response guide, which covers the four stages of the incident response lifecycle. [Learn more from our experts.](#)



Adapted from: CISA, FBI and EPA Release Incident Response Guide for Water and Wastewater Systems Sector

Download The Guide



CISA and FBI Release Two New Alerts for Manufacturers

The Cybersecurity and Infrastructure Security Agency (CISA) and the Federal Bureau of Investigation (FBI) recently issued two cybersecurity alerts for manufacturers.

[CISA and FBI Release Secure by Design Alert Urging Manufacturers to Eliminate Defects in SOHO Routers](#)

Release Date: January 31, 2024

CISA and the FBI published guidance on security design improvements for Small Office/Home Office (SOHO) Device Manufacturers as part of their new Secure by Design alert series, urging manufacturers to address exploitable defects as part of the product development lifecycle, shifting the responsibility away from users.

[CISA Releases Two Industrial Control Systems Advisories](#)

Release Date: February 1, 2024

The second alert relates to two Industrial Control Systems (ICS) advisories addressing specific vulnerabilities in Gessler GmbH WEB-MASTER and AVEVA Edge products (formerly known as InduSoft Web Studio). These advisories offer detailed technical information about the vulnerabilities, potential consequences, and recommended mitigation strategies.

CISA urges users and administrators of these ICS products to thoroughly review the advisories and implement the suggested mitigations promptly.

Please [contact our cybersecurity experts](#) if you need assistance or guidance.

AUTOMATION INNOVATIONS

ControlLogix Module Connects PLC to SQL Database

Connecting PLCs to enterprise SQL databases for digital transformation projects like track and trace, high-speed sorting, monitoring, or recipe downloading can be filled with “gotchas.” For example, how do you handle security, failover, debugging, protocol translation, transaction triggering and status? Learn how to confidently solve these challenges and stop worrying about the connections.

optimize!
softing



Watch Video

Power Up Your Robotics Workflow with Unified Robot Control Release 2

Revolutionize your workflow with Unified Robot Control Release 2. Design and deploy robot systems faster than ever.



- Effortless robot selection with a pre-integrated library and intuitive workflows
- Seamless configuration and catalog-driven setup frees your time for innovation
- Faster project completion and maximized ROIT with rapid development

[Learn More](#)

AUTOMATION FRONTIER BLOG

7 Benefits of Predictive Maintenance with the Rexel Support Agreement

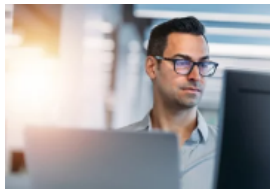
By: Kim Goodwin, Rexel Director of Customer Success and Life Cycle Services



Industrial manufacturers report that the cost of unplanned downtime can be anywhere from \$10,000 to \$100,000+ per hour. That's a lot of money you can't afford to lose. Here's a pro tip for you: Predictive maintenance can help. Discover 7 ways that this data-driven approach can save money, extend your equipment life, and support a sustainable future... [Read the blog.](#)

FEATURED LEARNING

Advance your Support Capabilities and Expand your Expertise with FactoryTalk Remote Access



February 20, 2024 | 10:00 - 11:00 AM CST
Sponsored By: Rockwell Automation

Secure remote access has become a game-changer for OEMs, SIs, and End Users,

Modernizing Your Production Scheduling with Smart Manufacturing



February 27, 2024 | 11:00 - 12:00 PM CST
Sponsored By: Rockwell Automation

As a critical function of every manufacturing operation, production scheduling acts as the

empowering them to expand their capabilities and streamline operations. This webinar dives into the unique functionalities of FactoryTalk® Remote Access™, specifically tailored to address your business needs. Get a firsthand look through a live demonstration showcasing key features and gain a comprehensive understanding of how it can optimize your operations.

[Register Here](#)

glue between planning and execution. With Finite Scheduler by Rockwell Automation, you can modernize your production cycle with reliable and responsive capacity scheduling capabilities to optimize the flow of production and maximize customer satisfaction. Hear why traditional scheduling tools create inefficiencies on the plant floor and learn about smarter scheduling.

[Register Here](#)

PRODUCT LIFECYCLE ADVISORY

Urgent Action Needed: Identify Discontinued Products in Your Plant

- **Discontinued:** Kinetix 6000, Kinetix 6200, and Kinetix 7000 Servo Drives and Micro830 controllers
- **End of Life Status:** Kinetix 6500 Servo Drives. These will no longer be available after **December 31, 2025**
- **Security Posture Lifecycle Status:** Automation-delivered Security Posture Survey projects must have the on-site delivery completed by **September 30, 2024**.
 - **June 30, 2024**, is the last day a PO for an order will be accepted. The Vulnerability Discovery Service is replacing Security Posture Survey.

Protect your production continuity and avoid costly downtime with timely upgrades. Click the button below to schedule a product lifecycle assessment from our experts.

[Schedule An Assessment Today](#)

Workforce **Development** 2024

[View Courses & Register](#)

As workforce and technology landscapes undergo dramatic change, it's critical for you to supplement skill shortages to stay productive and keep up with customer demands.

A clear workforce development and training strategy will help you mitigate workforce challenges. Empower your people and extend the reach of your team with Rexel's Workforce Support and Training Services.

CLICK TO CONNECT

YOUR RESOURCE FOR LOCAL SERVICES & SUPPORT



Rexel Customer Support Center - 1-888-REXELPRO (739-3577) | Your Go-To Partner

If you received this email as a forward, please subscribe to The Frontier [here](#).

[RexelUSA.com](#) [Contact](#) [Terms](#) [Privacy](#)



A Rexel Group Company
www.rexel.com

