

FRONTIER

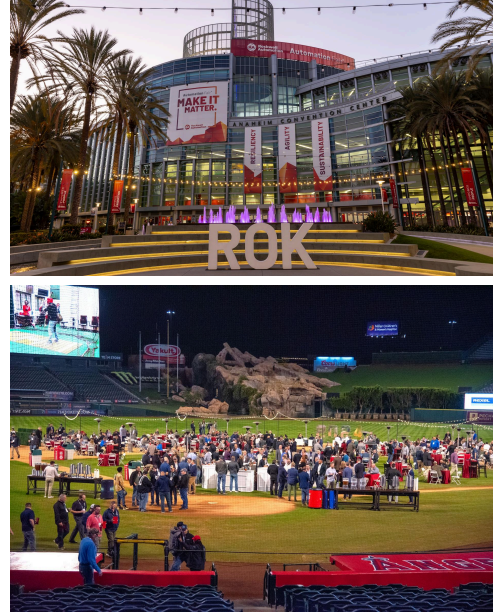
THE FUTURE OF INDUSTRIAL AUTOMATION

Automation Fair On-Demand is Now Available

Thank you to our customers and partners for the outstanding participation at this year's Automation Fair in Anaheim, California! Over 11,000 experts from the industrial automation industry came together to advance the greater manufacturing sector and uncover new technologies to support current objectives and future opportunities.

Couldn't attend this year? Get inspired by Rockwell Executive Leadership from these on-demand keynote sessions.

[Discover Automation Fair On-Demand](#)



Supplement Your Operations with Real-Time Insights



R+IQ stands out in its ability to implement software and connectivity solutions that propel intelligent manufacturing forward. Our experts enable manufacturers to enhance automation, data collection, and decision-making processes by connecting systems and equipment. Whether you need help in quality management, predictive maintenance or performance monitoring, we have the network of professionals to transform your operations. Click below to learn more.

[Transform With R+IQ](#)

Automation Innovations

Redefining Safety with Logix SIS from Allen-Bradley

Logix SIS is Rockwell Automation's cutting-edge safety instrumented system (SIS). It seamlessly integrates with your existing Rockwell Automation architecture, simplifying engineering and boosting efficiency. Achieve enhanced safety and compliance with this scalable solution.

[Read More](#)



World's 1st ThinManager®-Ready Tablets for Harsh Environments

Pepperl+Fuchs offers industrial-grade 8", 10" and 11.6" ThinManager®-Ready Tab-IND® and Pad-Ex® tablets for harsh & hazardous environments, transforming single devices into centrally managed endpoints to provide mobile visualization for frontline workers.

 **PEPPERL+FUCHS**

ThinManager improves productivity and visualization and extends security.



[Learn More](#)

Innovative, Fully Licensed I/O



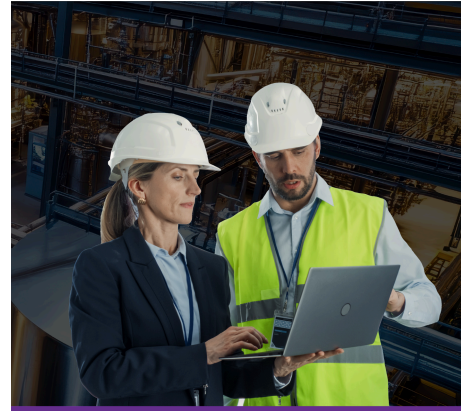
Discover Spectrum Controls various I/O solutions tackling the unique projects you face including high-density, isolated analog, analog with HART, and universal analog input modules. Functional on more than 10 Rockwell Automation platforms.

[Download the Product Catalog](#)

Automation Blog

4 Tips To Survive Peak Demand Charges

Throughout the history of the manufacturing industry, energy usage has been a story of transition marked by progress and challenges. Processes have become more demanding on finite resources as manufacturers juggle increased demand and cost reduction. As we've become more aware of the impacts of energy usage, there are promising avenues for manufacturers to achieve a more sustainable and energy-conscious approach to their operations that will save money. One of those ways is by reducing your peak demand charges.



11/15/2024 - David Fetz
Information Software Solutions Manager

[Read More >>](#)

Featured Learning

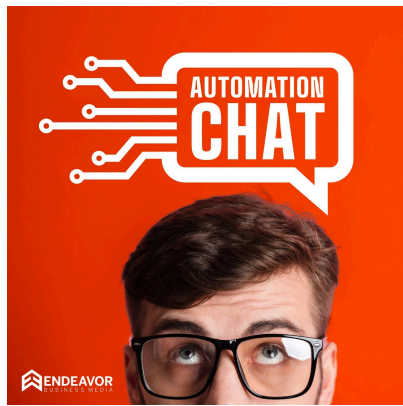
eHandbook: Troubleshooting Motors & Electrical Systems



In this educational resource from *The Journal*, learn about advancements in motors & drives, and how to evaluate their energy efficiency; why the proper VFD choice & installation method affects manufacturing plant performance; how to perform wire insulation resistance testing; and more.

[Download the eBook](#)

Podcast: Get Young People Involved in Manufacturing



This special crossover episode of our "Automation Chat" podcast from *The Journal*, "[MFG Day: Getting Young People Involved in Manufacturing](#)," is a panel discussion led by *IndustryWeek*'s Chief Editor Robert Shoenberger and includes a Manufacturing Institute expert and editors of *Machine Design*, *Chemical Processing* and *Pharma Manufacturing*. Listen on any podcast app or on the web.

[Listen Now](#)

Workforce **Development** **2025** Training for Industrial Automation

As workforce and technology landscapes undergo dramatic change, it's critical for you to supplement skill shortages to stay productive and keep up with customer demands.

A clear workforce development and training strategy will help you mitigate workforce challenges. Empower your people and extend the reach of your team with Rexel's Workforce Support and Training Services.

[View Courses & Register](#)



Rexel wishes you a Happy Holiday Season. Thank you for being a part of our family! As a reminder, you can download invoices and proof of delivery, view product information, check account balances, pay bills and order online 24/7* (yes, even on Christmas and New Year's Day)!

**Orders placed online when we are closed will not be processed until Thursday.*

[Shop at RexelUSA.com](#)

CLICK TO CONNECT



YOUR RESOURCE FOR LOCAL SERVICES & SUPPORT


 **Rexel Customer Support Center - 1-888-REXELPRO (739-3577) | Your Go-To Partner**

If you received this email as a forward, please subscribe to [The Frontier here](#).

Services & Support	Training	Shop Now	Automation Blog
--	--------------------------	--------------------------	---------------------------------

[RexelUSA.com](#) [Contact](#) [Terms](#) [Privacy](#)

 A Rexel Group Company
www.rexel.com

