

REXEL

AUTOMATION  
SOLUTIONS

# NEW PRODUCTS

Innovative Solutions for Industry 5.0

[Training & Events](#)
[Services & Support](#)
[Meet The Experts](#)
[Automation Blog](#)

## Issue Highlights

- FactoryTalk® Design Studio™
- 1606 Switched Mode Power Supplies
- My Equipment
- Fieldbus Universal Serial Communication Option Module
- LifeCycle Services
- 2025 Workforce Development \* *Introducing: DRV215 PowerFlex 750-Series Configuration, Startup, Maintenance, and Troubleshooting*

## Product Showcase

Cloud-Based, Software-Defined Industrial Automation Design



### Core Features and Capabilities



#### **AI-POWERED DESIGN**

Use natural language prompts with the integrated Generative AI Copilot to model your system, generate PLC code, explain project elements, and resolve errors quickly.

#### **CLOUD-TO-EDGE COMMUNICATIONS**

Design your project in FactoryTalk® Design Studio™, then deploy to FactoryTalk® Logix Echo to emulate your code or download directly to a ControlLogix® or CompactLogix® L8 controller, then monitor your code and devices online.

#### **ONLINE MONITORING**

Go online with your controller to see real-time status of the devices in your control system including your MCC lineup.






Learn More

For questions, please contact [Michael.Harkins@rexelusa.com](mailto:Michael.Harkins@rexelusa.com).

## 1606 Switched Mode Power Supplies



Our Bulletin 1606 Switched Mode Power Supplies include four product families that meet most global, single-, and three-phase application requirements. These units are designed and manufactured to accept wide ranges of both AC and DC input voltages and are tested to meet global safety standards.

Power Supply Family/ Attributes <sup>(1)</sup>	Performance Power Supply 1606-XLS	Essential Power Supply 1606-XLE	DC-DC Converter 1606-XLD	Compact Power Supply 1606-XLP	Basic Power Supply 1606-XLB
					
<b>Input Voltage</b>	Single/multi-phase	Single/multi-phase	DC Voltage	Single/multi-phase	Single-phase
<b>Watt Range</b>	80...960 W	80...960 W	92...240 W	15...100 W	36...480 W
<b>Multiple Output Voltages</b>	12, 24, 30, 36, 48V DC	12, 24, 48V DC	24, 48V DC	5, 12, 15, 24, 48V DC	12, 24V DC
<b>Terminations</b>	Screw, Cam Lock Spring	Screw, Cam Lock Spring, Plug, and Push-in	Screw, Cam Lock Spring	Screw, Cam Lock Spring, Plug	Screw, Push-in
<b>Auto Select Input</b>	Yes	Yes	—	Yes	Yes
<b>Power Boost</b>	150%/ 5 s	120%	120%	—	—
<b>DC OK Relay Output</b>	Yes	Yes	Yes	Yes	Yes
<b>DC OK Status Indicator</b>	Yes	Yes	Yes	Yes	Yes
<b>Wide Range</b>	Yes	Yes	—	Yes	Yes

Learn More

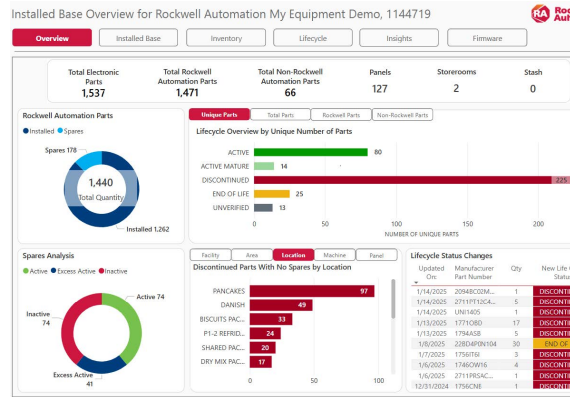
For questions, please contact [Aria.Janello@RexelUSA.com](mailto:Aria.Janello@RexelUSA.com).

My Equipment

Leveraging your installed base information to provide actionable insights within [myRockwellAutomation](#) digital portal.

- Reduced Risk
- Cost Savings
- Increased Uptime

[Learn More](#)



For questions, please contact [Bryan.Wenner@RexelUSA.com](mailto:Bryan.Wenner@RexelUSA.com).

## Fieldbus Universal Serial Communication Option Module

Featuring the new **Universal Serial Communication Option Card 20-750-USC-XT** for PowerFlex 750 Family.

[Download Manual](#)



For questions, please contact [Scott.Popiolek@RexelUSA.com](mailto:Scott.Popiolek@RexelUSA.com).

# LifeCycle Services

Build Knowledge and Expertise



**Want more information?** Ask your authorized Allen-Bradley® distributor which **Learning+ training subscription** is right for you, or visit: [rok.auto/trainingCopyright](http://rok.auto/trainingCopyright) ©

Our E-learning courses include fundamental and product-specific topics delivered directly to your plant floor or location of your choice. Each learning module contains activities, software simulations and demonstration videos to help reinforce learning concepts. Virtual classroom sessions include modularized virtual lectures, lab experience demonstrations, simulations and demonstration videos.

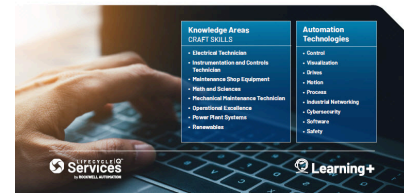
Office hours are available for small group coaching to enhance learning concepts. More capabilities and more content. Live and on-demand Genius Webinars are featured monthly, and content is continuously being developed. Assessment tools help baseline your knowledge and e-learning modules are available in multiple languages.

**Upskill your employees**  
with **flexible, on-demand** training solutions

You're challenged to provide your current workforce with the technical skills and knowledge that will keep your production environment operating smoothly. Our Learning+ training subscription provides the valuable, on-demand training you need with today's flexible workforce requirements in mind.

**Expanded training options now available**

	Learning+	Learning+ Enhanced	Learning+ Draft Skills	Learning+ Flex
<b>LEARNING ACCESS</b>				
40+ automation courses	✓	✓	✓	✓
Virtual classroom training	✓	✓	✓	✓
300+ hours of industrial craft skill courses	✓	✓	✓	✓
Genius Webinars	✓	✓	✓	✓
Product spotlight mini-courses	✓	✓	✓	✓
Assessment technology knowledge assessments	✓	✓	✓	✓
<b>PLATFORM FEATURES</b>				
Certificates of completion for e-Learning	✓	✓	✓	✓
Additional price discounts for multi-users	✓	✓	✓	✓
Reduction of user access	✓	✓	✓	✓
<b>SCALABLE OPTIONS</b>				
Annual subscription	✓	✓	✓	✓
Single course 90-day trial plan	✓	✓	✓	✓
Educational subscriptions	✓	✓	✓	✓



[Download Flyer](#)

For questions, please contact  
[Bryan.Wenner@RexelUSA.com](mailto:Bryan.Wenner@RexelUSA.com).

# Featured Learning

If Rockwell's in-person classes do not work for you, Rockwell offers their Learning+ subscription program which has a wide variety of classes that are flexible and fully virtual.  
[>> Learn More](#)

**INTRODUCING:**

**[DRV215 - PowerFlex 750-Series Configuration, Startup, Maintenance, and Troubleshooting](#)**

This course is a combination of CCA182 - PowerFlex 750-Series Configuration and Startup and CCA183 - PowerFlex 750-Series Maintenance and Troubleshooting delivered as a three-day in-person class. Upon completion of this course, given a wired PowerFlex® 750-Series drive (PowerFlex 753 or PowerFlex 755) and AC motor, you will be able to install the drive correctly, start it up, and configure drive parameters to meet application-specific needs. The course also introduces concepts and techniques that will assist you in successfully maintaining and troubleshooting the drive, recognizing PowerFlex 750-Series drive hardware, and diagnosing specific faults.

---

<p><b>Accelerated Logix5000 Programmer Certificate Level 1 (<a href="#">CCP250</a>)</b></p> <p><b>Rexel Salisbury, MD (July 21-25, 2025)</b></p> <p>401 Winfield Ave, Salisbury, MD 21801</p>	<p><b>\$3,935</b></p> <div style="background-color: #0056b3; color: white; padding: 10px; text-align: center; width: fit-content; margin: 0 auto;">Register</div>
---	---

---

**Studio 5000 Logix Designer Level 1: ControlLogix System Fundamentals ([CCP146](#))**

**\$2,440**

**Holiday Inn - Martinsburg, WV (September 23-24, 2025)**

301 Foxcroft Ave, Martinsburg, WV 25401

Register

**Studio 5000 Logix Designer Level 2: Basic Ladder Logic Programming ([CCP151](#))**

**\$2,440**

**Holiday Inn - Martinsburg, WV (September 25-26, 2025)**

301 Foxcroft Ave, Martinsburg, WV 25401

Register

**Studio 5000 Logix Designer Level 1: ControlLogix Fundamentals and Troubleshooting ([CCP299](#))**

**\$3,800**

**Rexel - Sparks, MD (September 29- October 3, 2025)**

120 Sparks Valley Rd A, Sparks, MD 21152

Register

**PowerFlex 750 Series Configuration, Startup, Maintenance, and Troubleshooting ([DRV215](#))**

**\$2,815**

**Rexel - Sparks, MD (October 14 - 16, 2025)**

120 Sparks Valley Rd A, Sparks, MD 21152

Register

*\*Please review the required prerequisites. Prerequisites MUST be addressed prior to registration for this course.*

[View Full Course Offering](#)

**Seating is limited! Register for a course today!**

For questions or help with registration, please contact [MidAService@RexelUSA.com](mailto:MidAService@RexelUSA.com).

**Missed a newsletter? Check out our newsletter archive [here](#).**

